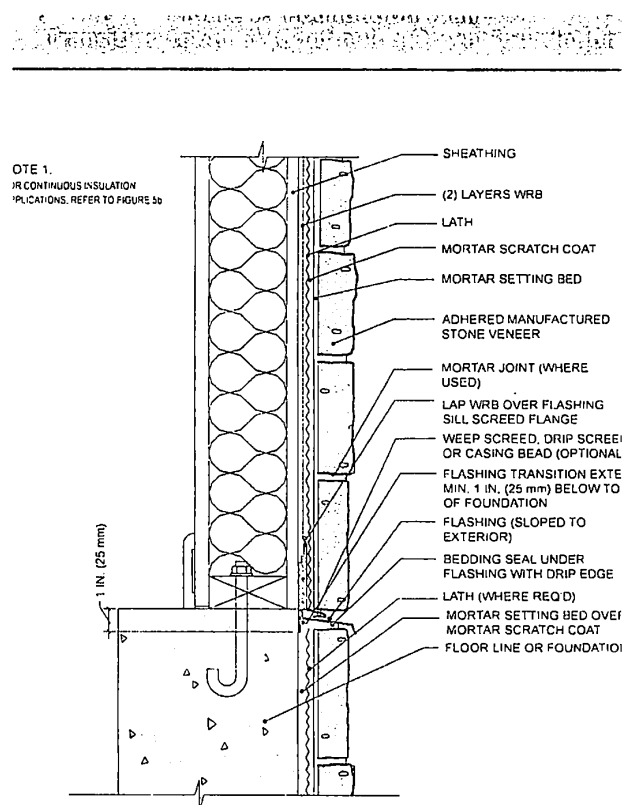
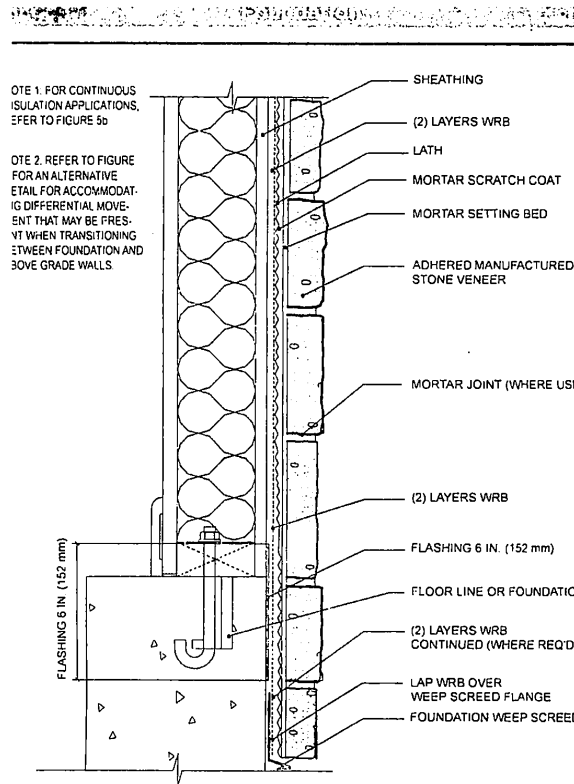


ADHERED STONE DETAILS



R703.12 Adhered masonry veneer installation.

Adhered masonry veneer shall comply with the requirements of Section R703.7.3 and the requirements in Sections 12.1 and 12.3 of TMS 402. Adhered masonry veneer shall be installed in accordance with Section R703.7.1, Article 3.3C of TMS 602 or the manufacturer's instructions.

R703.12.1 Clearances.

On exterior stud walls, adhered masonry veneer shall be installed:

1. Minimum of 4 inches (102 mm) above the earth.
2. Minimum of 2 inches (51 mm) above paved areas; or
3. Minimum of 1/2 inch (12.7 mm) above exterior walking surfaces that are supported by the same foundation that supports the exterior wall.

R703.12.2 Flashing at foundation.

A corrosion-resistant screed or flashing of a minimum 0.019-inch (0.48 mm) or 26-gage galvanized or plastic with a minimum vertical attachment flange of 3 1/2 inches (89 mm) shall be installed to extend a minimum of 1 inch (25 mm) below the foundation plate line on exterior stud walls in accordance with Section R703.4.